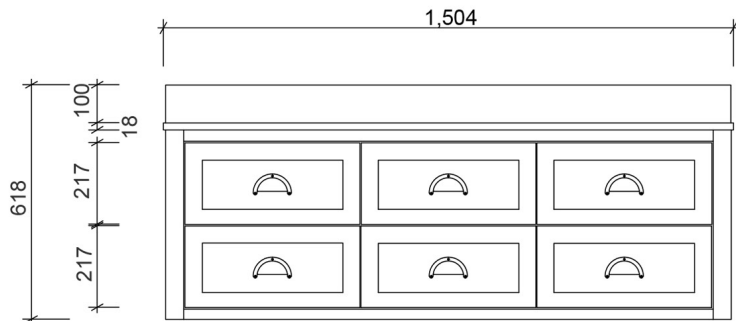
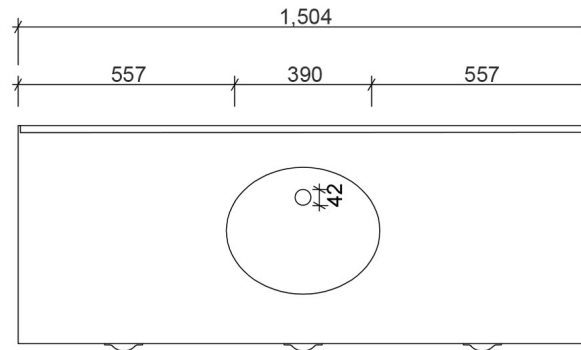


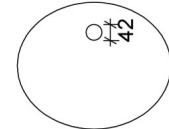
480
100
18



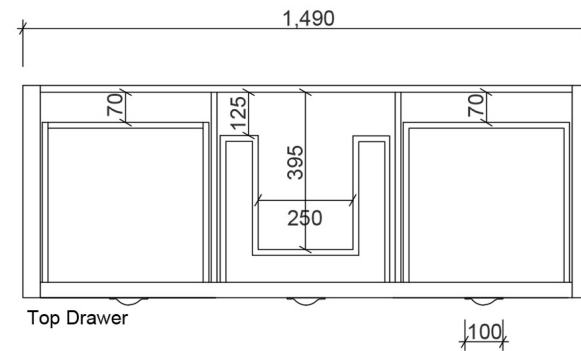
618
217
100
18
217



1,504
557 390 557

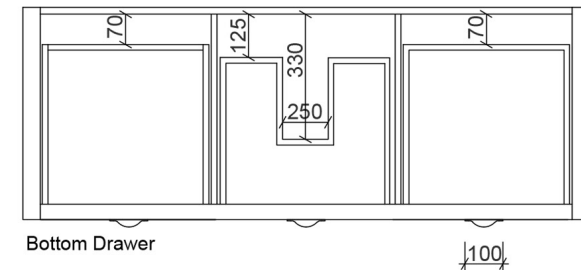


138
315
573
120



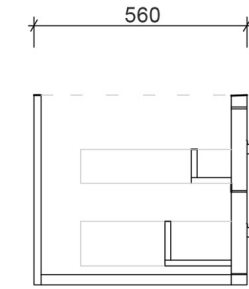
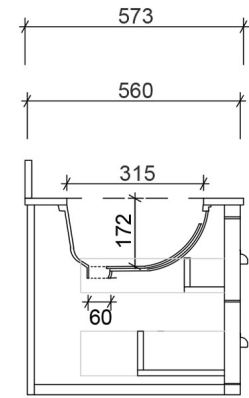
Top Drawer

100



Bottom Drawer

100



Section - Cabinetry only

573
560
315
172
60
500
100
18

560
500
100
18



Vanity By Design

ABN: 99 121 837 143

Brisbane Address:

241 Monier Road, Darra QLD 4076

Phone: Brisbane (07) 3376 6055

Email: enquiries@vanitybydesign.com.au

Website: https://www.vanitybydesign.com.au/

Name:	North Haven 1500 Single
Size :	1504 (W) mm x 573(D) mm x 518 (H) mm
Type:	Wall Hung
Cabinet Material:	Solid Sustainable Plantation Timber
Basin Material:	Ceramic under-mount or top mount basin
Bench Top Finish:	Smartstone options *
Splashback:	Removable splashback (NOT FULLWIDTH SPLASHBACK)
Taphole Options:	No taphole, 1 taphole or 3 tapholes
Vanity Colour Options:	Black, White, South Hampton Grey, Navy

Note:

Mirrors, Wastes and Tapware not included. Plumbing fixtures must be installed by a qualified plumber (waste not supplied). Vanity must be installed by a qualified tradesperson. Failure to do so may void the warranty. Vanity By Design vanities include a 5 year warranty on cabinets and tapware, 2 year warranty on tops and basins and 12 months warranty on mirrors.

Caution:

Component may be heavy and require two people to lift. Do not stand or sit on vanity.